

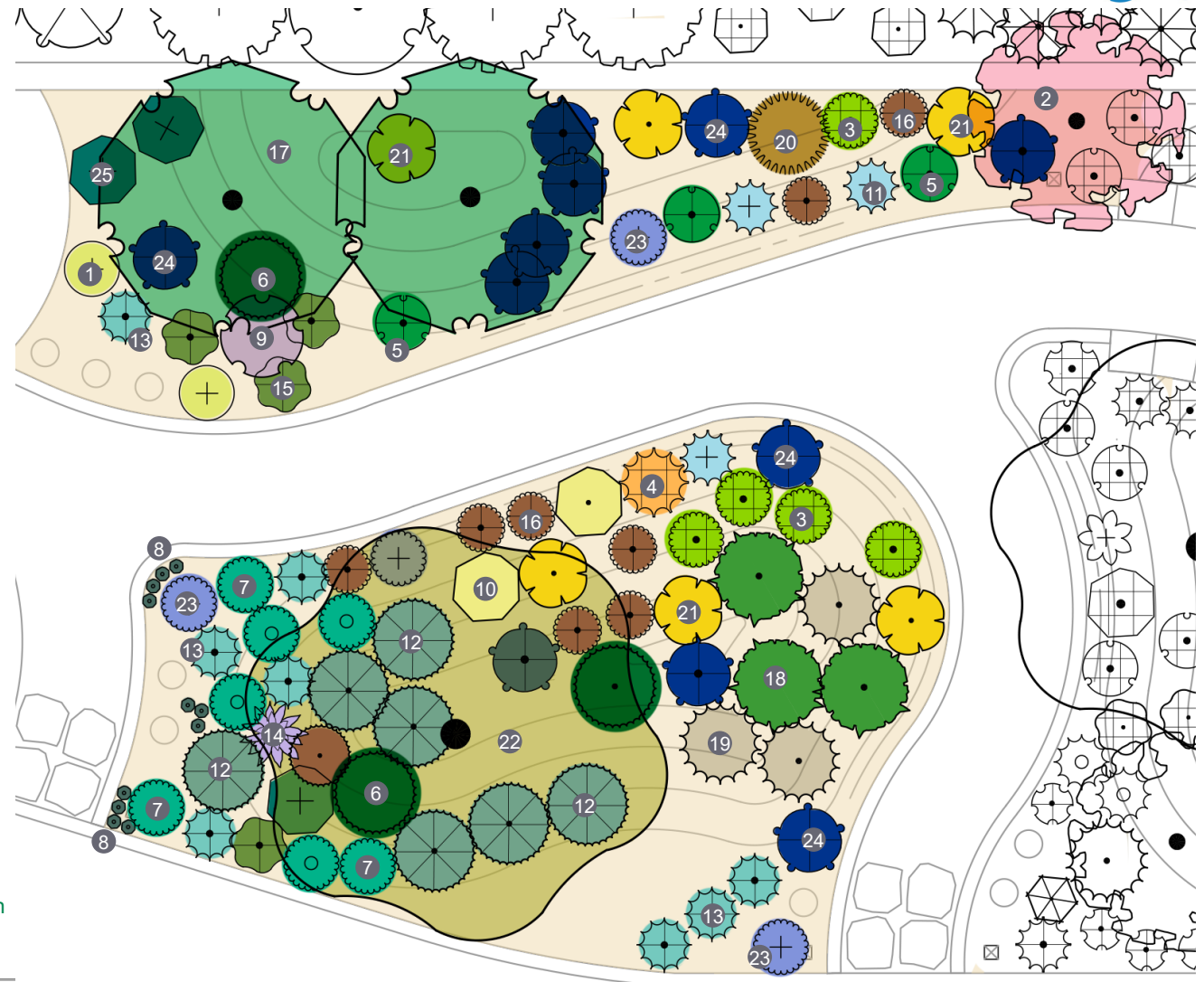
Plant Legend

- 1 Achillea x 'Moonshine'
- 2 Arctostaphylos densiflora 'Howard McMinn'
- 3 Bouteloua gracilis 'Blonde Ambition'
- 4 Bulbine frutescens 'Hallmark'
- 5 Calylophus berlandii
- 6 Chondropetalum tectorum
- 7 Dianella revoluta 'Little Rev'
- 8 Dymondia margaretae
- 9 Epilobium canum 'Summer Snow'
- 10 Eriogonum compositum
- 11 Eriogonum crocatum
- 12 Eriophyllum nevinii 'Canyon Silver'
- 13 Euphorbia myrsinites
- 14 Helictotrichon sempervirens
- 15 Lomandra confertifolia 'Seascape'
- 16 Lomandra longifolia 'Breeze'
- 17 Lyonothamnus floribundus asplenifolius
- 18 Muhlenbergia capillaris 'White Cloud'
- 19 Muhlenbergia dubia
- 20 Muhlenbergia lindheimeri 'Autumn Glow'
- 21 Phlomis russeliana
- 22 Quercus agrifolia
- 23 Salvia chamaedryoides
- 24 Salvia x 'Marine Blue'
- 25 Teucrium majoricum

Medium to Low Water Use



Pollinator Garden Plan



Key Plan

Flowering perennials not only provide beauty, but also food and habitat for birds and insects. Choose plant varieties from similar climates to ours, such as other parts of California, the Mediterranean, Australia, and South Africa, to create a lush and colorful landscape, support pollinators, and provide habitat for birds.

Select native plants that bloom in the spring, summer, and fall to provide a year-round food source.

 California native plant

