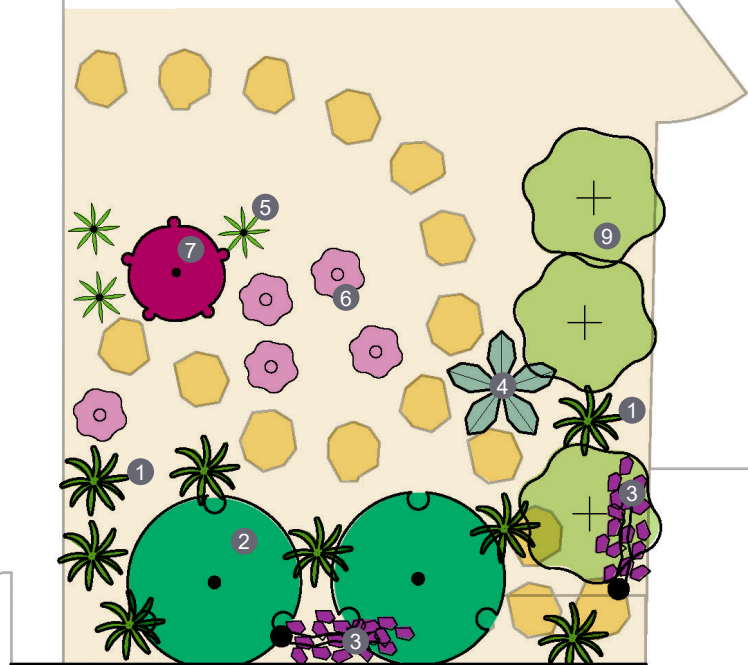
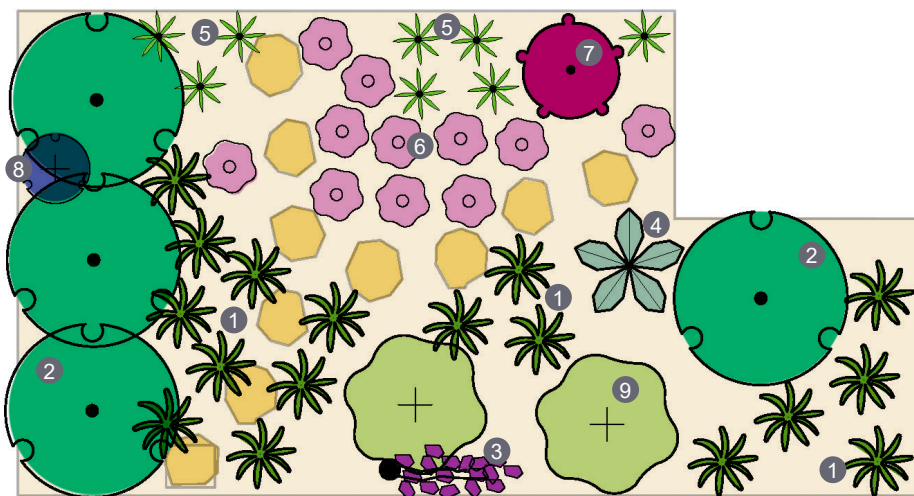




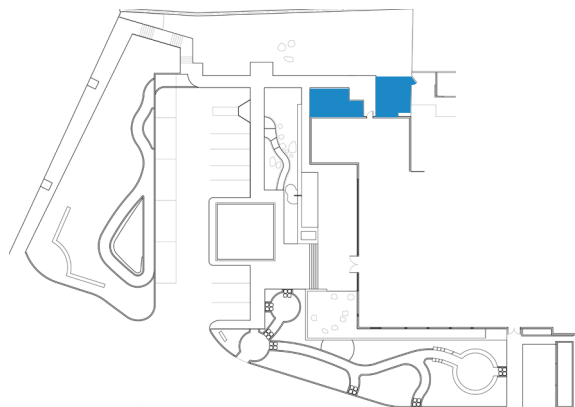
Shade Garden Plan



Plant Legend

- 1 Clivia miniata 'San Marcos Yellow'
- 2 Frangula (Rhamnus) californica 'Leatherleaf'
- 3 Hardenbergia violacea 'Canoelands'
- 4 Helleborus argutifolius
- 5 Iris douglasiana pch 'Canyon Snow'
- 6 Liriope spicata 'Silver Dragon'
- 7 Loropetalum chinense rubrum
- 8 Penstemon heterophyllus 'Margarita Bop'
- 9 Pittosporum tobira 'Variegata'

Key Plan



Shady spots in a garden offer refuge from the heat and add ambiance.

Plant California climate-friendly plants that do well in the shade in areas such as side yards, places under overhangings, and north-facing spots that receive less than a full day of sun.

 California native plant

