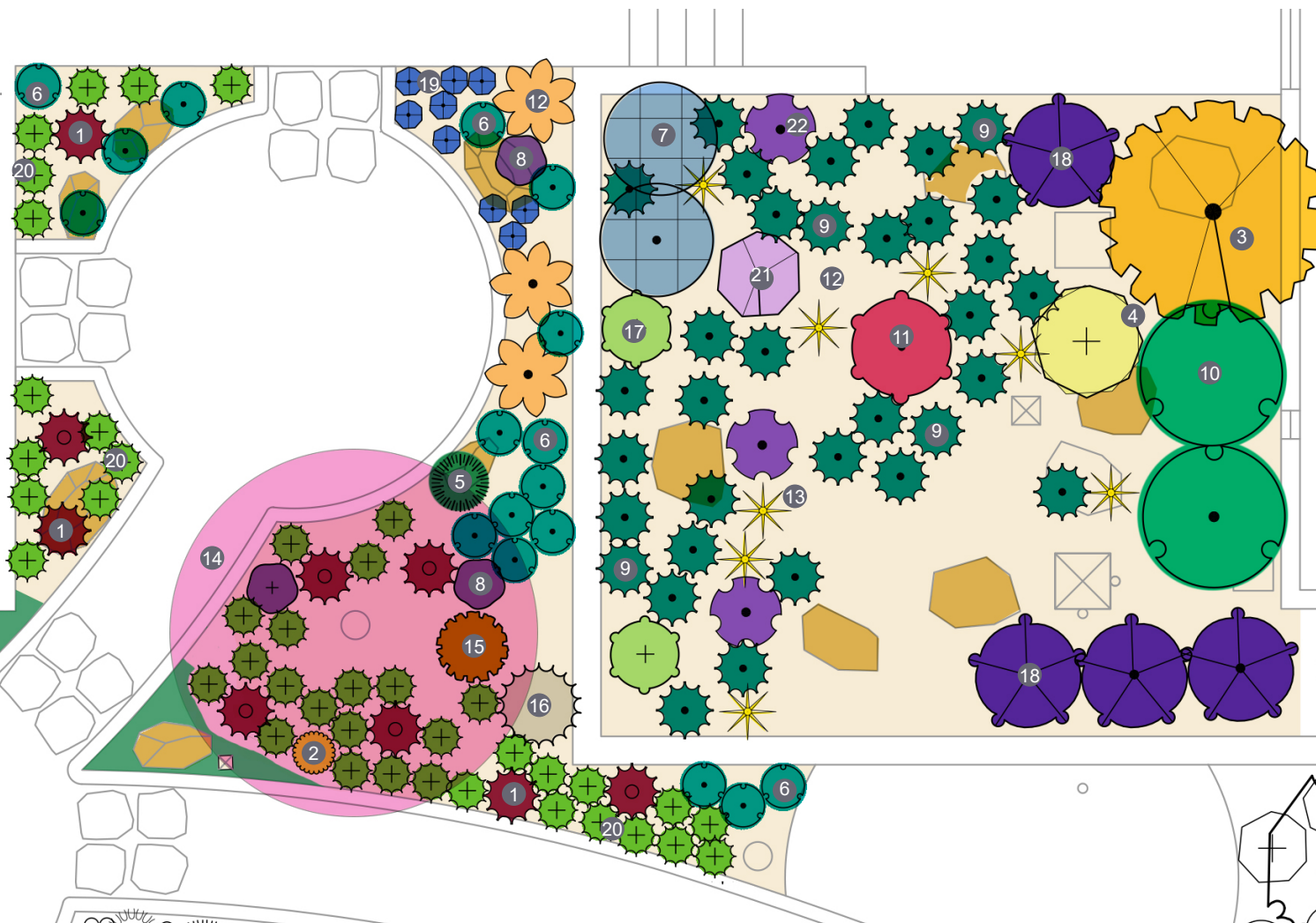


Lush Garden Plan

Plant Legend

- 1 *Alstroemeria* x 'Indian Summer'
- 2 *Aquilegia chrysantha*
- 3 *Berberis* x 'Golden Abundance'
- 4 *Carpenteria californica* 'Elizabeth'
- 5 *Chondropetalum tectorum* 'El Campo'
- 6 *Dianella caerulea* 'Cassa Blue'
- 7 *Dichondra argentea* 'Silver Falls'
- 8 *Euphorbia* x 'Blackbird'
- 9 *Festuca californica*
- 10 *Frangula (Rhamnus) californica* 'Leatherleaf'
- 11 *Galvezia speciosa*
- 12 *Kniphofia thompsonii*
- 13 *Kniphofia* x 'Dwarf Yellow'
- 14 *Lagerstroemia indica*
- 15 *Muhlenbergia capillaris* 'Pink Flamingo'
- 16 *Muhlenbergia dubia*
- 17 *Pittosporum crassifolium* 'Compactum'
- 18 *Salvia* x 'Amistad'
- 19 *Sesleria caerulea*
- 20 *Sesleria* x 'Greenlee Hybrid'
- 21 *Verbena bonariensis* 'Lollipop'
- 22 *Verbena lilacina* 'De La Mina'



You can replace your unused lawn and still have an attractive yard of lush green plantings. Try a mix of evergreen grasses and shrubs that flower throughout the year. They will not only reward you with pops of color and visual interest, but provide essential food and habitat for pollinators such as birds, bees and butterflies.

Allow your grasses and shrubs to mingle and create a natural meadow look, or if you prefer a more formal look, plant them in distinct groupings.

 California native plant

