

How Can I Get My Free Supply?

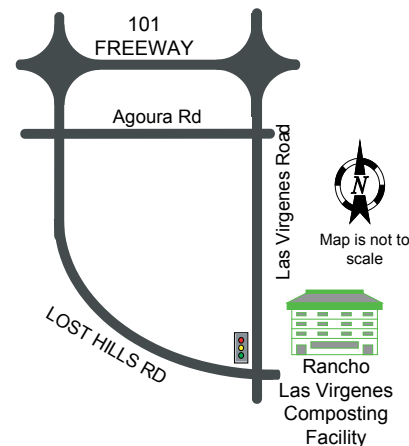
What: Household supplies of RLV Community Compost, a rich soil amendment made with recycled organic biosolids.

For bulk (commercial and residential) supplies, call 818.251.2200 for more information.

How: Bring a container(s) with a cover, or strong plastic bags with ties, or a tarp to cover the bed of your pick-up truck. Shovels are provided, but you will be responsible for filling your own container(s).

When: Every Saturday, 8 am to 1 pm (except holidays ~ Check on-line at [www.LVMWD.com/Conservation/ Outdoor Conservation/ Rancho Las Virgenes Community Compost](http://www.LVMWD.com/Conservation/Outdoor%20Conservation/Rancho%20Las%20Virgenes%20Community%20Compost) to see closed dates.)

Where: Rancho Las Virgenes Composting Facility
3700 Las Virgenes Road
Calabasas, CA



Where and How is RLV Community Compost Made?

Compost is produced at the Rancho Las Virgenes Composting Facility. This facility provides a method of recycling wastewater solids from the Tapia Water Reclamation Facility. By accelerating the natural process, a safe and valuable by-product is produced. For more detailed information, visit our website at www.LVMWD.com under Conservation / Outdoor Conservation / Rancho Las Virgenes Community Compost

Product Boundaries

Compost will improve soil properties, such as soil texture and structure, and will increase water infiltration and retention. However, compost may not initially fulfill all plant nutrient requirements in soils with low fertility. In such cases, supplemental application of organic fertilizers, for a season or two, will assist in making the transition.

As with all gardening products, use common sense and good hygiene, wash your hands after using RLV Community Compost. Also, as with any product containing nitrogen, do not introduce RLV Community Compost into any body of water. Avoid run-off when watering lawns and flower beds after its application.



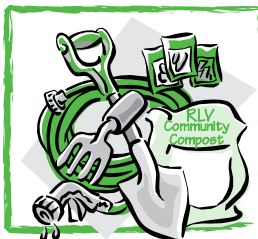
Rancho Las Virgenes Community Compost

A nutrient rich soil amendment made with recycled organic biosolids

Provided **FREE** to the community by the **Las Virgenes / Triunfo Joint Powers Authority**

Rancho Las Virgenes Composting Facility
3700 Las Virgenes Road, Calabasas, CA 91302
www.LVMWD.com





Guidelines on Using RLV Community Compost

Class A (EQ) = Exceptional Quality

This means there are no restrictions on how much can be applied as long as the compost meets the plant needs.

What is Rancho Las Virgenes Community Compost?

RLV Community Compost is a natural product with a high humus content. Produced to stringent specification, it has earned a coveted "Class A - Exceptional Quality" designation from the US EPA. It is the end product of the environmentally sensitive solids handling process at Rancho Las Virgenes Composting Facility. Biosolids* from Tapia Water Reclamation Facility are transformed through a composting process into an excellent soil amendment that can be used to enhance landscapes, ornamental areas, lawns, and vegetable gardens.

*What are biosolids? Wastewater is made up of everything that goes down the drain in homes and businesses. The 99% that is liquid is reclaimed and re-used for irrigation, the remainder organic portion is biosolids.

RLV Community Compost

Nutrient Analysis ~ 2009

RLV Community Compost contains both readily available and long-term nitrogen and other nutrients for greener plants:

Total Nitrogen (N)	2.2%
Available (Inorganic Nitrate & Ammonia)	0.3%
Slow Release Organic N	1.9%
Phosphorous (P ₂ O ₅)	2.4%
Potassium (K ₂ O)	0.2%
C/N Ratio	20
pH	7.4

Trees & Shrubs...

Dig a planting hole 4 times the width of the tree or shrub, and save the soil to mix two parts to one part of RLV Community Compost. Place a portion of the mixture in the hole and then the tree or shrub. Add the remainder of the mixture around the plant, occasionally firming it, to secure the root ball. Then water thoroughly.

Flower Beds and Vegetable Gardens...

For new flower gardens, use 3-9 cubic yards of RLV Community Compost per 1,000 square feet (about 1-3 inches and incorporate to at least a 5-6 inch depth). Amend established gardens every year with about 1 1/2 cubic yards of compost / per 1,000 square feet (1/2 inch).



Lawns...

Top dress established lawns by uniformly applying 1 1/2 cubic yards of RLV Community Compost per 1,000 square feet (1/2 inch) once or twice a year (autumn and spring). Consider aerating before topdressing if soils are compacted.

For new lawns or to replace lost topsoil, apply 3-9 cubic yards of RLV Community Compost per 1,000 square feet (1-3 inches) and rototill to a depth of 4-6 inches.

Planters...

To make potting soil for outdoor or indoor planters, mix one part RLV Community Compost to 2 parts soil. Mix until uniform, then plant your seeds/bulbs and water thoroughly.

General Information...

RLV Community Compost is an excellent source of beneficial soil micro-organisms (see Nutrient Analysis box) that can help turn dead, compacted soils into healthy, living, and porous soils.

These micro-organisms assist in making nutrients in the soil available to the plants. Regular applications of compost, coupled with practices such as grasscycling and mulching, eliminates the need for fertilizers.

Application rates depend on soil fertility.

NOTE: No green waste materials are used, therefore, RLV Community Compost is free of plant diseases and herbicides.

What Are the Benefits of RLV Community Compost?

As a soil amendment, RLV Community Compost:

- increases water-holding capacity of light soils,
- enhances aeration in heavy soils,
- provides immediate and slow-release nutrients for plant growth.

As an alternative for biosolids disposal, it:

- transforms waste into a beneficial product,
- offers a long-term disposal method,
- diverts material from landfills.